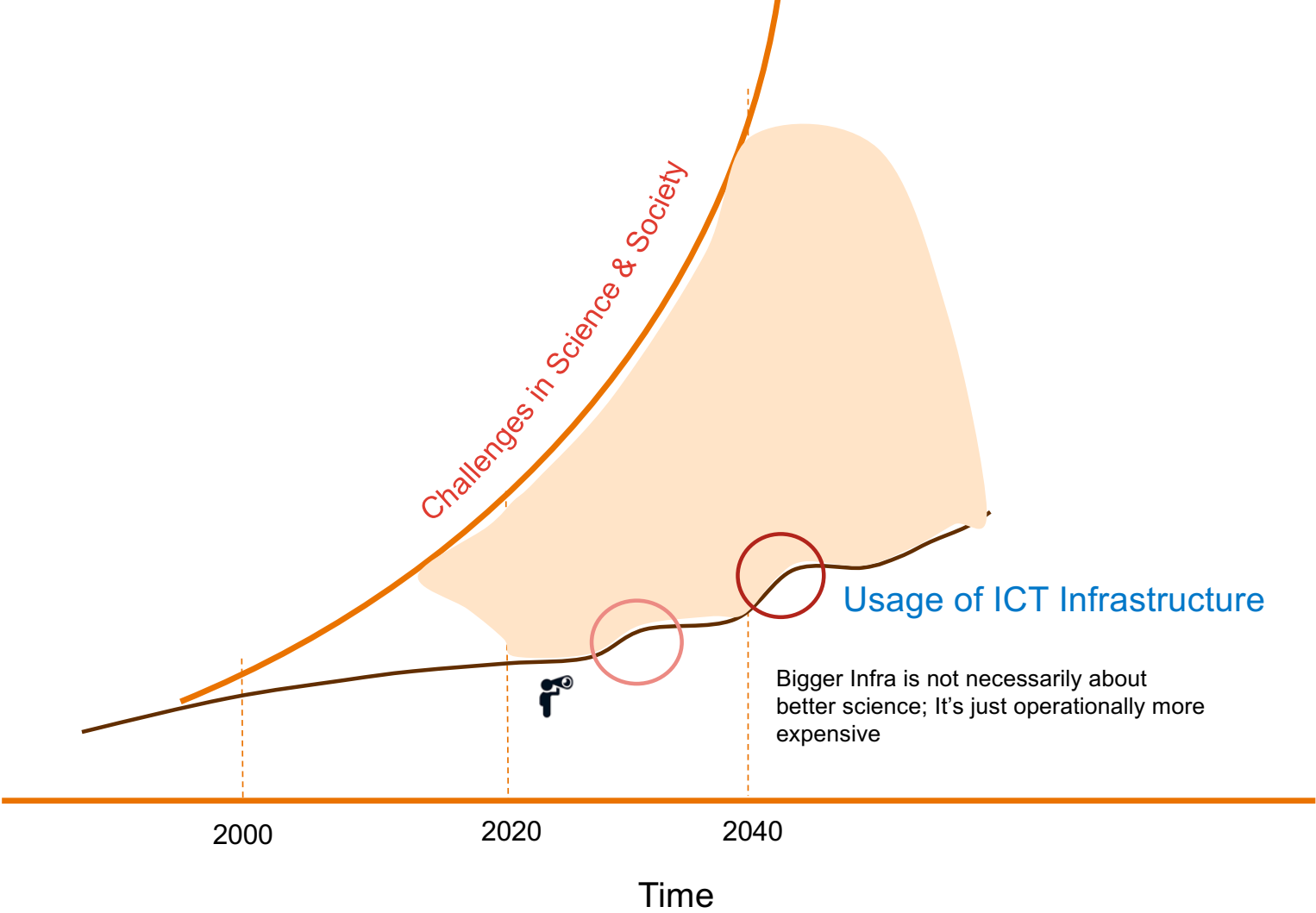


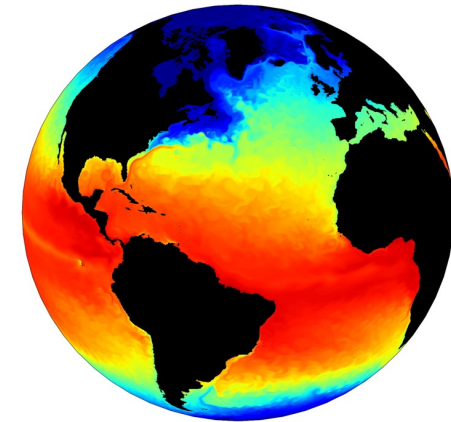
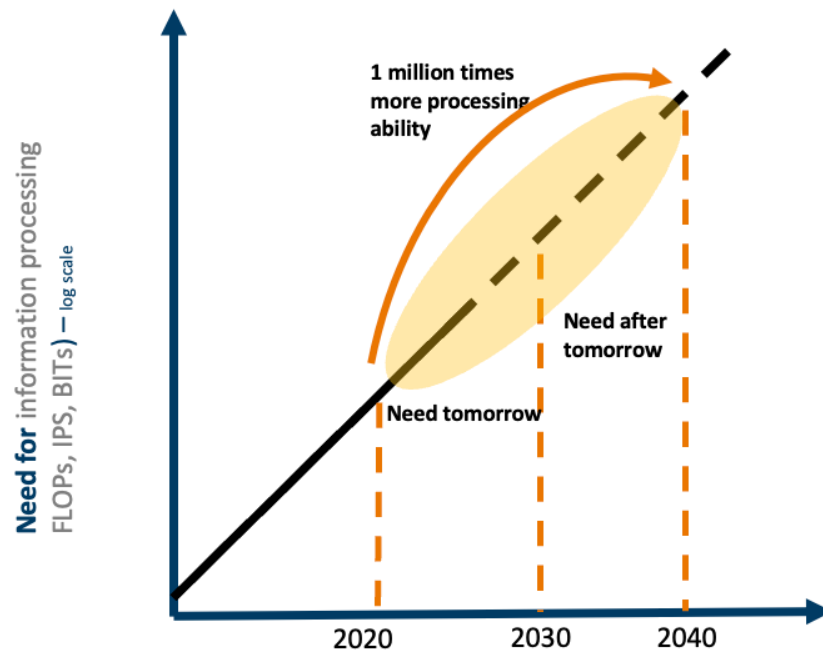
Science, Society and Economy depends more  
& more **on Computing.**

Future demands a ***new direction to the Digital Infrastructure Ecosystem. ; It requires a fundamental re-design of value***

# Relative Evolution



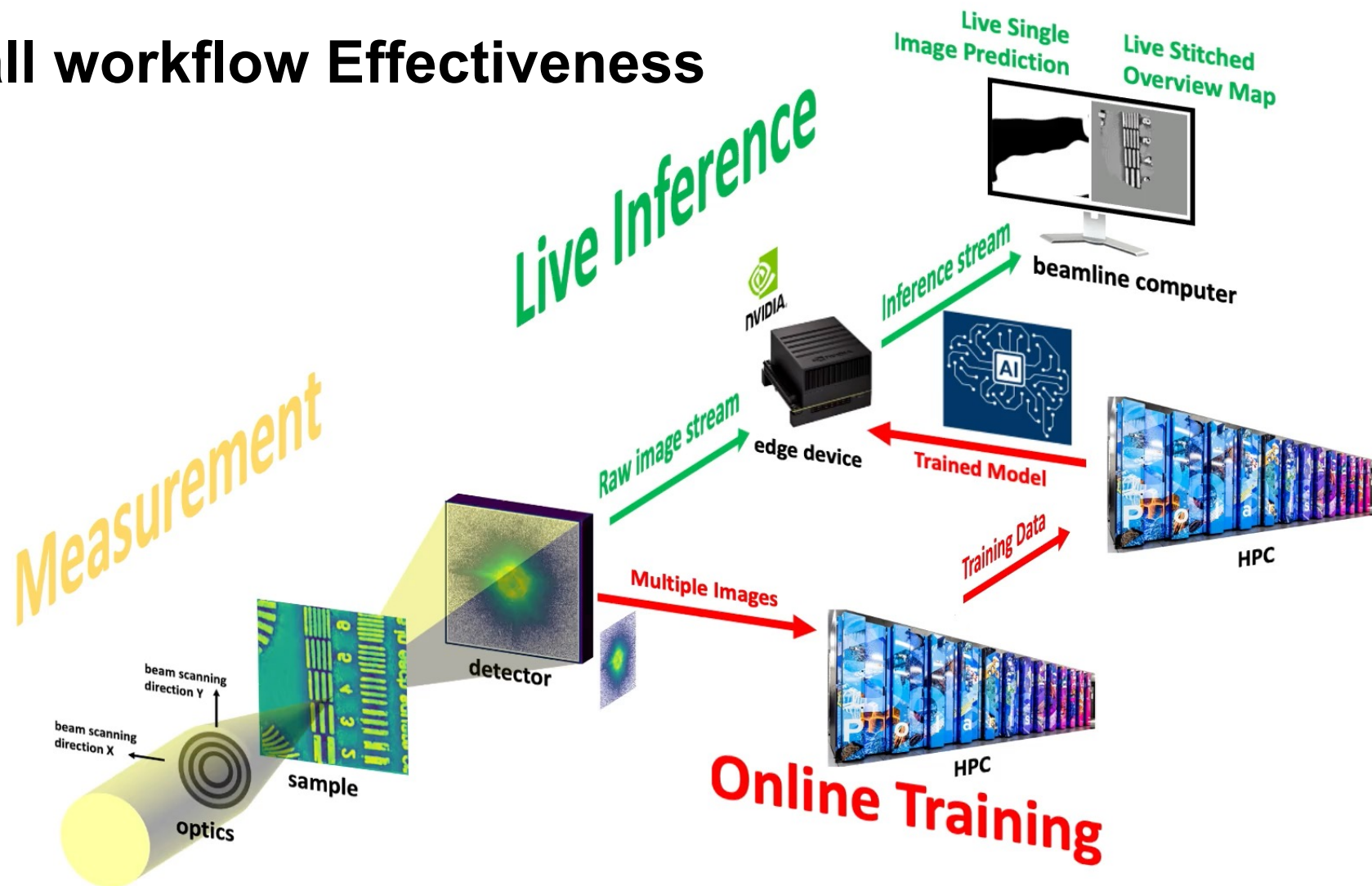
# Challenge-based information processing capability?



Think about **global** climate simulations.

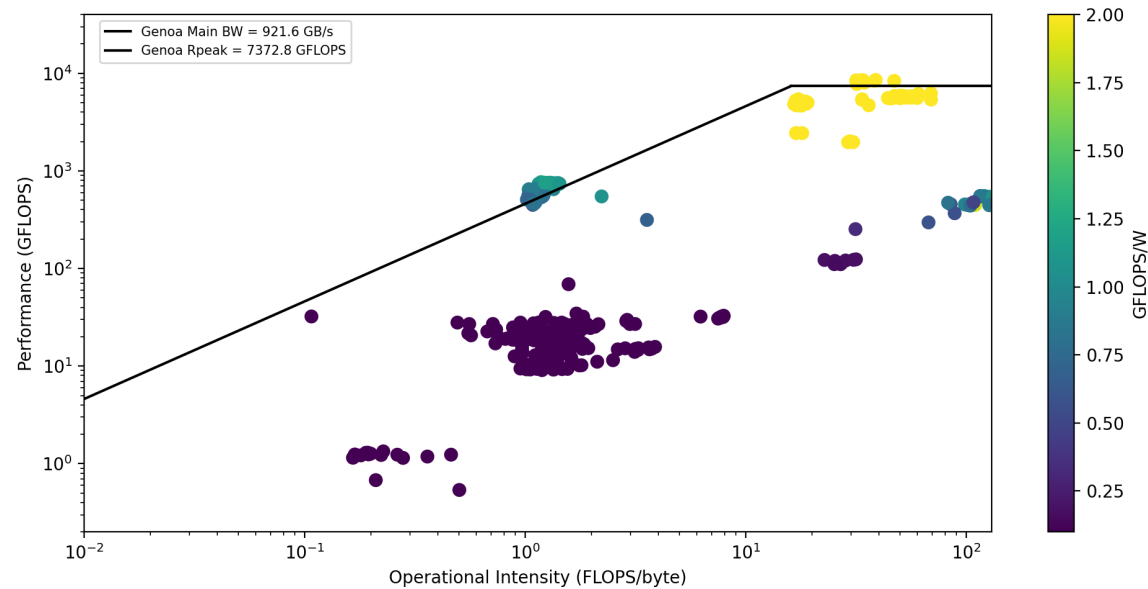
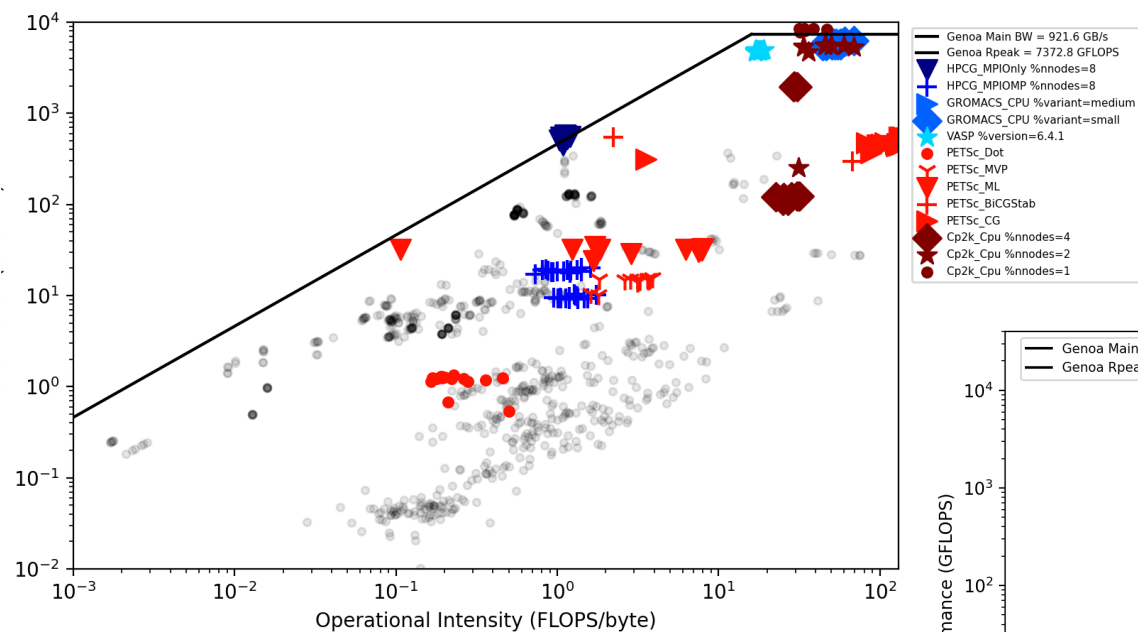
10x more fidelity in space & time needs  
 $O(10^6)$  mixed precision information  
processing

# Overall workflow Effectiveness

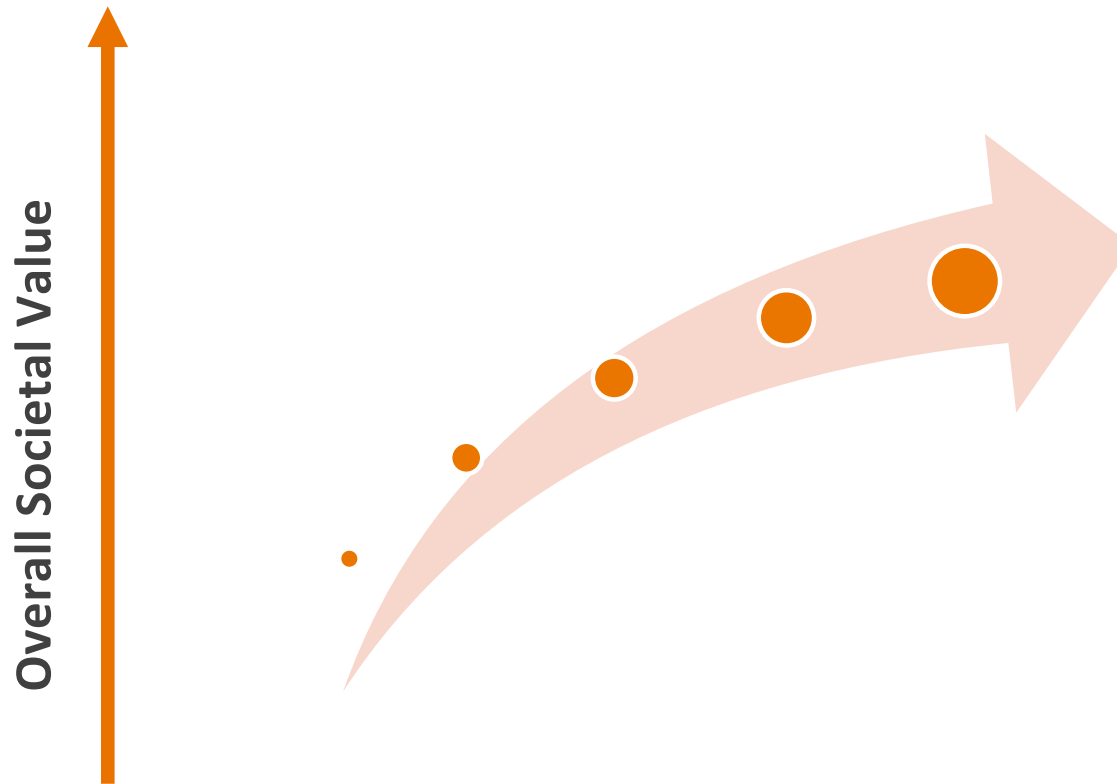


SURF

# Application Workflow Footprint



# Change the lens of the metric



## Utility-centric ecosystem

- What is the footprint for achieving a scientific outcome with computing?

## Resource-centric viewpoint

What is the impact of running an application?

# Key Arguments?

